

# WRAPS



## An Introduction

In this age of artificial fibers and performance textiles, there is still some thing undeniably appealing about handmade fabrics created from authentic natural fibers, which retain their original organic appeal.

At IAN SAUDE our primary focus is on natural yarns — often spun by hand from fibers in their original, native colors — enhanced by artisan looming, dyeing, and finishing techniques to lend them a unique point of view. With an emphasis on tactile fibers like cashmere and silk, linen and bamboo, our hand-spinning and hand-loomed techniques conspire to create accessories that are sumptuous in their simplicity.

Comfort is always one of our primary considerations. Our accessories must not only look good, they also need to feel good—conveying a sense of nurturing and reassurance while still being fun and easy to wear.

## About

Working for decades in the Himalayan cashmere industry, Ian has developed numerous branded accessory collections for his own company, as well as spearheading a number of private label projects for other well-known designers.

Over time, having worked on styles ranging from heavily embellished evening wear pieces to classic knits and wovens, his primary focus remains on styles that convey an honesty of materials and express a sense of understated artisan luxury.





## DOUBLE LAYER TWEED LW074

### DESCRIPTION:

This 100% cashmere scarf is composed of three opposing panels that can be layered in different combinations, producing various color effects.

### DIMENSIONS:

28"W x 80"L

### MATERIALS:

100% cashmere

### COLORS:



white / beige



charcoal/coffee



black / white



### NOTES:

Pricing is quoted F.O.B. from San Luis Obispo, CA  
Please contact us for current pricing, leadtimes, or other inquiries.  
Call +1.805.784.0967 or e-mail: [info@iansaude.com](mailto:info@iansaude.com)





**SCATTERSHOT**  
LW206

DESCRIPTION:

This all-season-weight felted cashmere wrap is embroidered by hand with an abstract geometric pattern. Contrasting colors coordinate perfectly with the season's most popular colors for women's apparel.

DIMENSIONS:

28"W x 80"L

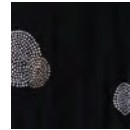
MATERIALS:

100% cashmere knit with 2-ply silk embroidery

COLORS:



ivory



black



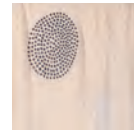
charcoal



coffee



light coffee  
melange



beige  
melange



light grey  
melange



NOTES:

Pricing is quoted F.O.B. from San Luis Obispo, CA  
Please contact us for current pricing, leadtimes, or other inquiries.  
Call +1.805.784.0967 or e-mail: [info@iansaude.com](mailto:info@iansaude.com)





**SOPHIE**  
LW077

DESCRIPTION:

Our best-selling, all-season-weight cashmere knit is felted by hand and available in a variety of popular sizes. Sophie is always available in a range of neutral yarns as well as a seasonal color palette.

DIMENSIONS:

stole — 28" W x 80"L  
wrap — 40"W x 80"L

MATERIALS:

100% cashmere

COLORS:



cream



light grey



charcoal



black



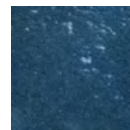
coffee



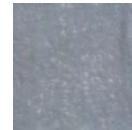
light coffee



light beige



storm blue



steel blue



NOTES:

Pricing is quoted F.O.B. from San Luis Obispo, CA  
Please contact us for current pricing, leadtimes, or other inquiries.  
Call +1.805.784.0967 or e-mail: [info@iansaude.com](mailto:info@iansaude.com)





**TOOSH POMPOM**  
LW131

DESCRIPTION:

This shawl is hand-loomed in a classic birdseye pattern first popularized by the classic Indian ring shawls made from shahtoosh. Our environmentally friendly version made from 100% cashmere features a fun pom-pom detail around all four sides and is available in four natural colors.

DIMENSIONS:

30"W x 80"L

MATERIALS:

100% cashmere

COLORS:



natural white



light beige



light coffee



heathered  
light grey



black heather



storm blue



steel blue



NOTES:

Pricing is quoted F.O.B. from San Luis Obispo, CA  
Please contact us for current pricing, leadtimes, or other inquiries.  
Call +1.805.784.0967 or e-mail: [info@iansaude.com](mailto:info@iansaude.com)



**BRERA**  
LW7114

**DESCRIPTION:**

This 100% cashmere neutral color block scarf features a chevron weave, providing ultra-comfort and timeless style.

**DIMENSIONS:**

32"W x 80"L

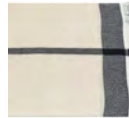
**MATERIALS:**

100% cashmere

**COLORS:**



lt. grey / beige / coffee combination



lt. grey / beige / black combination



lt. grey / beige / navy combination



**NOTES:**

Pricing is quoted F.O.B. from San Luis Obispo, CA  
Please contact us for current pricing, leadtimes, or other inquiries.  
Call +1.805.784.0967 or e-mail: [info@iansaude.com](mailto:info@iansaude.com)





**CIRINA  
LW7116**

DESCRIPTION:

All-season-weight cashmere knit is felted by hand and available in a variety of colors with white stripes accenting the ends. Cirina is always available in a range of neutral yarns as well as a seasonal color palette.

DIMENSIONS:

wrap – 40"W x 80"L

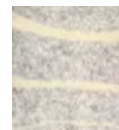
MATERIALS:

100% cashmere

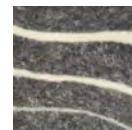
COLORS:



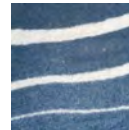
light beige



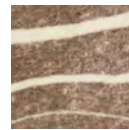
light grey



charcoal



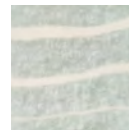
storm blue



dark coffee



light coffee



sage



NOTES:

Pricing is quoted F.O.B. from San Luis Obispo, CA  
Please contact us for current pricing, leadtimes, or other inquiries. Call +1.805.784.0967 or e-mail: [info@iansaude.com](mailto:info@iansaude.com)





**STARFALL**  
LW208

DESCRIPTION:

This all-season-weight felted cashmere wrap is embroidered by hand with an abstract floral pattern. Contrasting ombre embroidery on solid background taken from the seasons most popular colors for women's apparel.

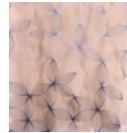
DIMENSIONS:

28"W x 80"L

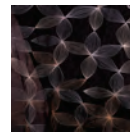
MATERIALS:

100% cashmere with silk ombre embroidery

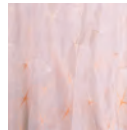
COLORS:



denim



black



rose



tunis



NOTES:

Pricing is quoted F.O.B. from San Luis Obispo, CA  
Please contact us for current pricing, leadtimes, or other inquiries.  
Call +1.805.784.0967 or e-mail: [info@iansaude.com](mailto:info@iansaude.com)

