



SERAPE

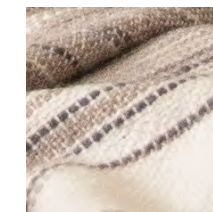
LT004

DESCRIPTION:
This naturally variegated throw with self-fringe is woven from handspun cashmere yarns that have been space-dyed by hand in lovely earthen tones to provide each piece with its own unique pattern.

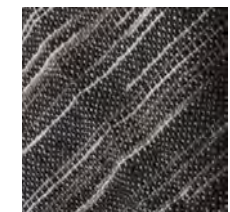
DIMENSIONS:
50"W x 80"L

MATERIALS:
100% hand-spun cashmere

COLORS:



tofu / nougat / steel



natural / light grey / black



blue / cream / white

Additional colors available. 5 piece order minimum.

NOTES:
Pricing is quoted F.O.B. from San Luis Obispo, CA
Please contact us for current pricing, leadtimes, or other inquiries.
Call +1.805.784.0967 or e-mail: info@iansaude.com

rev. 01/23

